



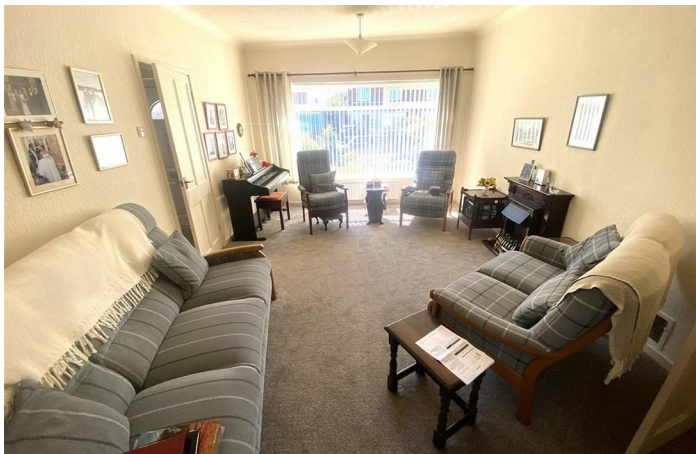
12 Wilton Drive

West Monkseaton, Whitley Bay NE25 9PU

- Semi Detached Bungalow
 - 3 Reception Rooms
 - Modern Shower Room
 - Utility Room/second w.c.
 - Freehold
- Stunning Gardens
 - Fitted Kitchen
 - 2 Bedrooms
 - Driveway
 - No Upper Chain

£330,000





Well situated on the charming Wilton Drive in Whitley Bay, this delightful semi-detached bungalow presents a fabulous opportunity for those seeking a spacious and versatile home, offering ready to move into accommodation.

The bungalow boasts three inviting reception rooms, providing ample space for relaxation, entertaining, or multi purpose use.

Step outside to discover a beautiful rear garden, well-stocked with stunning plants and flowers, creating a serene outdoor retreat. This garden is perfect for enjoying sunny afternoons. Additionally, the property includes a driveway for off-street parking and a garage, which has been converted into a utility room and second w.c., still leaving space for storage.

Situated in an excellent location, this bungalow is close to local amenities, ensuring that everything you need is just a short distance away. Whether you are looking for a peaceful retreat or a home that can adapt to your lifestyle, this property is a must-see.

Briefly comprising Entrance Porch, Lounge with double sliding doors to Second Reception Room, with square arch to a 18ft Dining Room with double French doors to rear, Re-fitted Kitchen with a good range of wall & floor units with roll top work surfaces incorporating a sink unit, gas hob and electric oven, door to Utility Area with work bench and space for white goods, access to garage for storage only, Second w.c, Inner Hallway with 2 Bedrooms master with built in wardrobes, Shower Room with walk in good sized enclosure with mains shower, vanity washbasin and low level w.c.. Externally to the front is block paved driveway and garden area, to the rear there is a stunning well stocked fenced garden with Summer House and storage shed.

Entrance Porch

Living Room

18'4 x 12'2

Second Reception Room

12'2 x 11'2

Dining Room

18'7 x 8'9

Kitchen

12'4 x 8'4

Utility Room

7'5 x 6'3

W.C,

Inner Hallway

Bedroom One

13'8 x 12'0

Bedroom Two

7'10 x 6'8

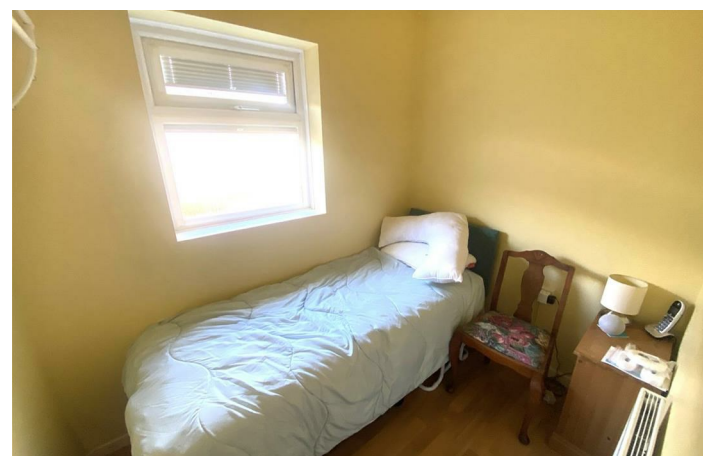
Shower Room

5'10 x 5'6

Externally

Disclaimer


ML Estates Ltd endeavour to maintain accurate descriptions of properties in Virtual Tours, Brochures, Floor Plans and descriptions, however, these are intended only as a guide and purchasers must satisfy themselves by personal inspection. All rooms have been measured with electronic laser and are approximate measurements only. None of the services to the above property have been tested by ourselves, and we cannot guarantee that the installations described in the details are in perfect working order. ML Estates for themselves, the vendors or lessors, produce these brochures in good faith and are a guideline only. They do not constitute any part of a contract and are correct to the best of our knowledge at the time of going to press. Pictures may appear distorted due to enlargement and are not to be used to give an accurate reflection of size. All negotiations and payments are subject to contract. The Tenure of the property should be clarified by your legal representative prior to exchange of contracts.








Local Authority North Tyneside
Council Tax Band C
EPC Rating
Tenure Freehold

Energy Efficiency Rating		
	Current	Potential
<i>Very energy efficient - lower running costs</i>		
(92 plus) A		
(81-91) B		
(69-80) C		
(55-68) D		
(39-54) E		
(21-38) F		
(1-20) G		
<i>Not energy efficient - higher running costs</i>		
England & Wales	EU Directive 2002/91/EC 	

Environmental Impact (CO ₂) Rating		
	Current	Potential
<i>Very environmentally friendly - lower CO2 emissions</i>		
(92 plus) A		
(81-91) B		
(69-80) C		
(55-68) D		
(39-54) E		
(21-38) F		
(1-20) G		
<i>Not environmentally friendly - higher CO2 emissions</i>		
England & Wales	EU Directive 2002/91/EC 	



ML Estates Sales Office

27 Avenue Road, Seaton Delaval, Tyne
 And Wear, NE25 0DT

Contact

0191 237 60 60
 sd@mlestates.co.uk
 www.mlestates.co.uk/

Agents Note: Whilst every care has been taken to prepare these particulars, they are for guidance purposes only. All measurements are approximate and for general guidance purposes only and whilst every care has been taken to ensure accuracy, they should not be relied upon and potential buyers/tenants are advised to recheck the measurements.